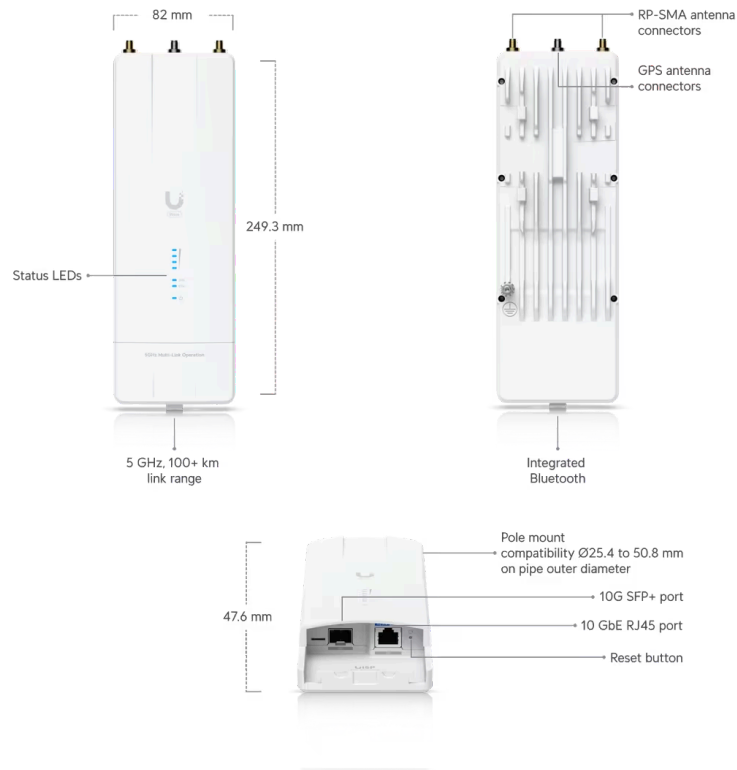




Wave MLO5

WAVE-MLO5



Mechanical

Dimensions

249.3 x 82 x 47.6 mm (9.8 x 3.2 x 1.9")

Weight

575 g (1.3 lb)

Enclosure material

Aluminum alloy, UV-resistant polycarbonate

Mount material

Strap: stainless metal
Universal bracket: UV-resistant polycarbonate

Pole mount diameter

25.4 to 50.8 mm (1 to 2") on pipe outer diameter

Weatherproofing

IPX6

Hardware

Processor

Quad-core IPQ5322 at 1.5 GHz

Memory

DDR4 1 GB

Networking interface

(1) 10 GbE RJ45 port
(1) 10G SFP+ port

RF connectors	(2) RP-SMA (Waterproof) (1) GPS (Waterproof)
Max. power consumption	20W
Power method	Passive PoE 4-pairs (1, 2+; 3, 6-) (4, 5+; 7, 8-) Passive PoE 2-pairs (4, 5+; 7, 8-), for 44-54V DC only
Power supply	54V DC, 0.56A, 10 GbE PoE adapter (Included)
Supported voltage range	44-54V DC 22-27V DC
Max. TX power*	
5 GHz	24 dBm *Depends on regulatory region.
MIMO	
5 GHz	(2) 2 x 2
GPS	Yes
Button	(1) Factory reset
LEDs	(1) Power, (1) Ethernet, (1) GPS, (4) signal
Ambient operating temperature	-40 to 60° C (-40 to 140° F)
Ambient operating humidity	5 to 95% noncondensing
Certifications	FCC, IC, CE
NDAA Compliant	Yes
Software	
Operating mode	PtP
Services	UISP, ping watchdog, NTP client
Tools	Alignment, speed test, ping, traceroute, discovery, site survey
Network	Bridge mode
Total throughput	5+ Gbps
Max. range*	100 km *Throughput and range values may vary depending on the environmental conditions.
Encryption	WPA3-PSK (AES)

RF

Operating frequency*

5180 – 5320, 5500 – 5700, 5745 – 5825 MHz

*Depends on regulatory region.

Channel bandwidth

Radio 1: 20, 40, 80, 160 MHz

Radio 2: 20, 40, 80, 160, 240 MHz

Modulation

BPSK ($\frac{1}{2}$), QPSK ($\frac{1}{2}$), QPSK ($\frac{3}{4}$), 16QAM ($\frac{1}{2}$), 16QAM ($\frac{3}{4}$), 64QAM ($\frac{2}{3}$),
64QAM ($\frac{3}{4}$), 64QAM ($\frac{5}{6}$), 256QAM ($\frac{3}{4}$), 256QAM ($\frac{5}{6}$), 1024QAM ($\frac{3}{4}$),
1024QAM ($\frac{5}{6}$), 4096QAM ($\frac{3}{4}$), 4096QAM ($\frac{5}{6}$)