

CAT 6 UTP PATCH CORD

DESCRIPTION

- Adopt LINKBASIC Cat6 stranded cable and Cat6 RJ45 modular plugs, the performance of LINKBASIC patch cable can meet or exceeds all requirements for Cat6 standard . Compatible with LINKBASIC Cat6 keystone jacks and Cat6 24 port patch panel, guarantees 350MHZ broadband transmission .

FEATURES

- Unique design of Cat6 RJ45 modular plugs and line pair decrease cross talk and increase allowance.
- Excellent attenuation and crosstalk continuity
- Meet or exceed the requirement for UTP system
- 100% tension test
- Allow RJ45 plugs to provide high-density solution
- Available in different colors
- They are available in a variety of the length

APPLICATION

- Communication outlet
- Concentration point
- Patch panel
- Equipment termination

MECHANICAL CHARACTERISTIC;

- Durability: 1000 plugging
- Contact: phosphor bronze with 50 μ m gold plating
- Nominal outer diameter: 4.1 \pm 0.20mm
- Minimum bending radius: 22.4mm

PHYSICAL CHARACTERISTICS

- Conductor: 28 AWG bare copper
- Insulation material: PE
- Structure: 4 twisted pair, Cross filler
- Jacket for RJ45 plug: PVC or LSZH
- Material for RJ45 plus: PC polycarbonate
- Flame test: CM or CMR

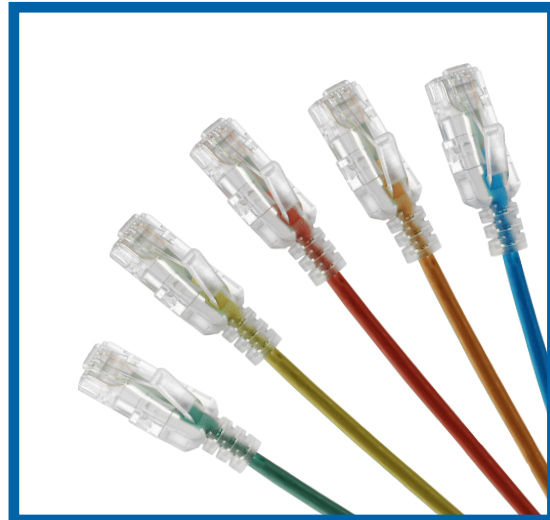
ORDER INFORMATION

Part number	Description	Inner box	Carton measurement
CAA01-UC6- *-#	Cat 6 UTP Patch Cable	1PC	L 53.5cm× W 31.3cm × H 23.4cm

Use * to specify the length : 0.2=0.2 meter, 0.5= 0.5 meters , 1=1 meters , 2=2 meters , 3=3 meters

Use # to specify the color : A = black B =blue C =red D= orange E=yellow F= gray G =green

PATCH CORD, CAT6, UTP, RJ45, molded boot, available in different length and color. S/N:C04-008



CAT 6 UTP PATCH CABLE (CAA01-UC6- *-#)

ELECTRICAL CHARACTERISTICS

Dielectric strength	1,000V RMS 60Hz/1min
Voltage Class(maximum)	150VAC
Rated current(maximum)	1.5A
Insulation resistance(minimum)	10M ohm
Contact resistance(maximum)	2 ohm max

PRODUCT FIGURE

